

harvi



energy harvesting wireless sensor

Installation Guide

Model Number

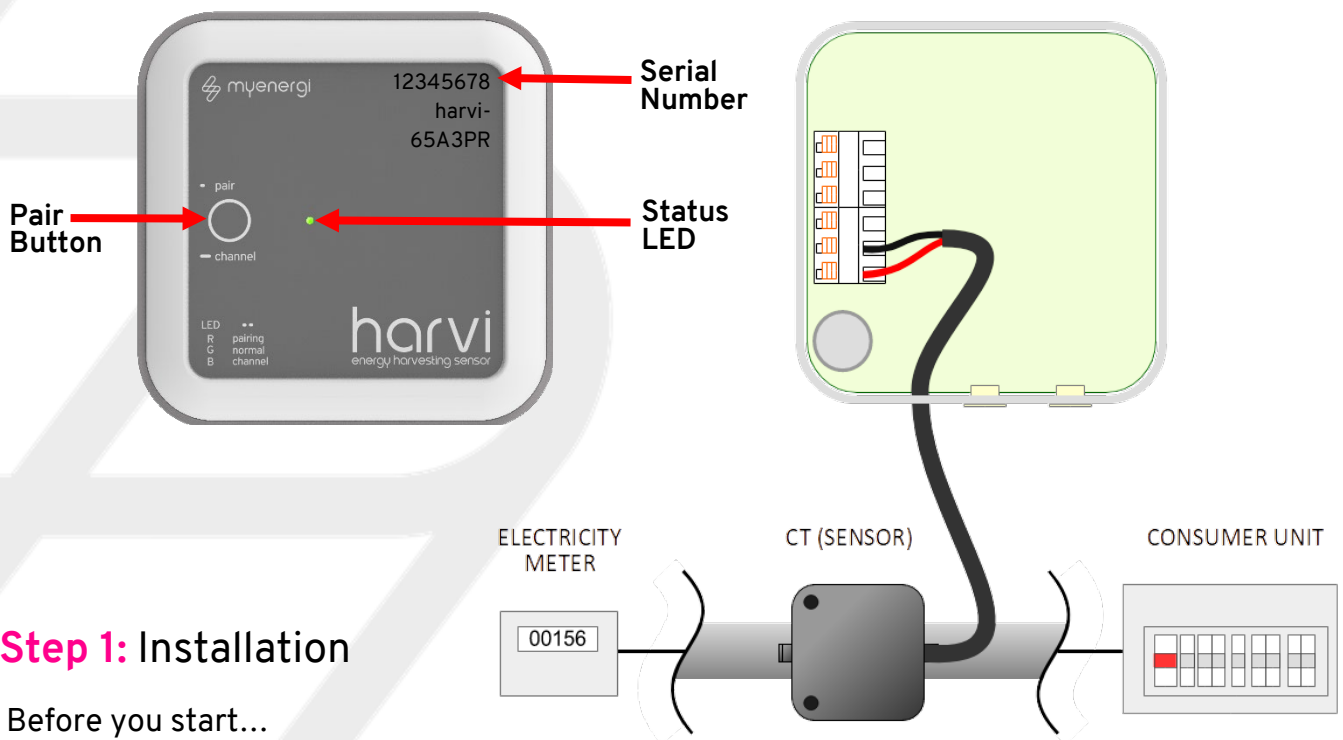
harvi-65A3PR, harvi-65A3PR-A

Introduction

harvi is a clever little device that enables myenergi devices to be installed without using a directly connected current transformer (CT) for measuring the grid and/or generation power - instead the CT is connected to harvi. No power source is needed for harvi - the energy harvested from the CT is used to transmit the measurement signal to your other myenergi device. This means batteries or separate power supply are eliminated.

NOTE

It is not G100 compliant to connect the grid CT to a harvi in conjunction with a zappi



Step 1: Installation

Before you start...

- ⊗ harvi can be wall mounted
- ⊗ harvi can have up to 3 CT's connected
- ⊗ Multiple harvi devices can be used on one site
- ⊗ Batteries or power supply NOT required

1. Ensure the CT is securely clipped around the cable to be monitored - make sure the arrow sticker on the CT is pointing in the direction of normal current flow (normally towards the consumer unit).
2. There is a cable grip installed on the back of the harvi. Simply pass the CT wire through the top hole and then push down to lock into place.



3. Connect 1,2 or 3 CT's to the CT input(s), the red wire should be connected to the (+) terminal and the black wire to the (-) terminal of the harvi device.
4. Ensuring there is power being drawn on the chosen live tail, allow up to **two minutes** for the status LED to start flashing green.

Step 2: Pairing with myenergi device

1. Press the pair button briefly
2. By default the LED should flash blue once, indicating that harvi is on channel 1. However, there may be times when the channel may need to be changed; see “**Optional: Changing Channel**”
3. Then the LED will flash red to indicate the harvi is in pairing mode.
4. First, check the myenergi device you are pairing harvi to is set as “Master”.
5. Then, select Settings > Advanced > “enter passcode” > Linked Devices > Pairing Mode
6. The harvi should appear on the screen within a few seconds.
7. Check the serial number on the screen matches the number on the front of the harvi device and press (✓) or (+) to add the harvi device.

NOTE

If pairing the harvi to a network of already paired devices, the harvi should only be paired with the ‘Master’.

Optional: Changing Channel

The default channel is number 1 and normally this will not need to be changed, however, there may be a situation where there is some other device causing interference on a particular channel.

To change channel:

1. Press and hold the pair button until the LED flashes blue, the LED will flash rapidly to indicate the current channel number 1 to 8.
2. To change the channel, press and hold down the button, the current channel will then cycle from 1 to 8 indicated by the LED. Once the desired channel is indicated, immediately release the button.
3. Ensure all other myenergi paired devices are set to the same channel. (Settings > Advanced > “enter passcode” > Linked Devices > Channel

NOTE

If connecting to older myenergi devices (those with serial no. starting with a ‘1’) then only channels 1.3 & 4 can be used. with the exemption of Australian installs.

Step 3: Configuration

After pairing the harvi, the myenergi device will need to be configured to use the harvi. The function of the CT’s connected to the harvi are also configured via the myenergi unit.

1. On the myenergi ‘Master’ device, go to Settings > Advanced > CT config
2. Disable the relevant CT input(s) for that device - this ensures the unit uses the harvi CT instead of a wired CT.
3. Then go to “Advanced Settings” > “Linked Devices” > “Devices”
4. Highlight the harvi device and press (✓) or (+)
5. Configure the CT’s according to the installation. Refer to specific manual for the myenergi device you are configuring.
6. If harvi is to be used on a 3-phase installation then ensure you set harvi to “three phase”. This will automatically set all 3 CT inputs to the same input source e.g. grid, generation etc. If used on 3-phase make sure that the Net Phases setting on your myenergi device is turned on

NOTE

Please ensure you refer to our GOLDEN CT RULES, which can be found in the all myenergi device manuals when connecting the CT’s

Technical Specifications

CT Inputs:	3 inputs enable 3-phase or multi-point power measurement
Measurement Range:	25W to 15kW (50Hz AC, import and export)
Energy Harvesting Range:	0.2A to 65A per input phase (Including reactive current)
Accuracy:	2.0% Typical
Transmission Rate:	1s @ 1A+, <10s @ 0.5-1A, <30s @ <0.5A
Wireless Interface:	868 / 915MHz (proprietary protocol)
Mounting Location:	Indoor only (can be housed in an IP rated plastic box, if required for outdoor installation)
Dimensions:	98 x 98 x 36mm
Operating Temperature:	-30°C to +50°C

Technical Support

If you experience any issues with your harvi during or post installation, please contact our technical support team by scanning the QR Code below



<https://myenergi.com/support-centre/>

Please contact us directly for the quickest solution